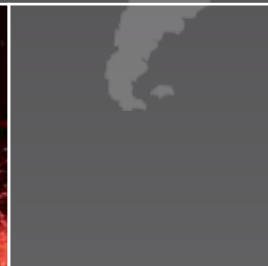


# Rotocast TUFF

ISO 9001-2008 Certified

## High Performance Abrasives



INDIA'S  
**LARGEST**  
EXPORTER OF STEEL  
**ABRASIVE**



**30+**  
YEARS OF  
**EXCELLENCE**

**1000+**  
CUSTOMERS  
SERVED  
**DIRECT**



INDIA'S  
**LARGEST**  
MANUFACTURER OF STEEL  
**ABRASIVE**



# About the Company

With more than three decades of experience **Rotocast** is the oldest and most reliable name in the Indian Steel Abrasive industry.

From the first manufacturer in India and a humble 500 T / annum capacity in 1984 to more than 30,000 T / annum today we have seen some phenomenal growth.

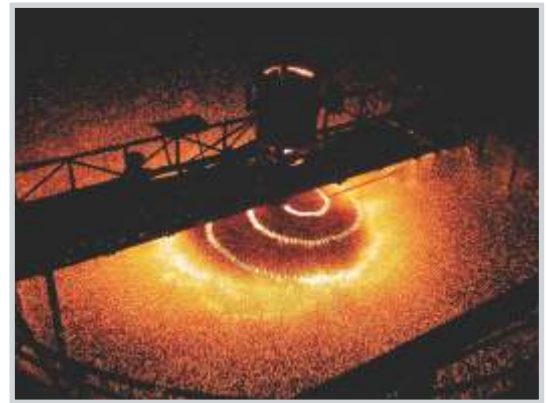
## It is with pride that we note today:

- We serve more than 1000+ industrial consumers directly
- We are India's largest manufacturer of steel abrasives
- We are India's largest exporter of Steel Abrasives

This growth has been made possible only with continuous technical up-gradation of our manufacturing and servicing capabilities.

In line with the country's new mantra of "Make in India" - we recently commissioned a totally new manufacturing line with the help of European equipments and know-how. This new line dedicated to the production of premium quality abrasives has enabled us to export our products to Europe and beyond.

Our products are today made on a unique automated manufacturing line meeting a variety of industrial standards. Automation and strict compliance to ISO 9001-2008 norms ensures that we have unmatched consistency in our product quality.



Our range of abrasive products now cover the entire application range of surface preparation, surface blasting, shot peening, granite cutting and ballast applications.

## Our product range

- **Rotocast TUFF** : A range of high performance steel shot and steel grit
- **Rotocast** : A range of value for money standard steel shot and steel grit
- **Rotocast Granite Grit** : A specially produced Steel Grit for Granite cutting application
- **Rotocast SCW** : Stainless Steel Cut Wire shots



# What is *Rotocast Tuff*?

**Rotocast Tuff** is our range of premium abrasives. Made for the first time in India they provide the same or often better performance than International products from world leaders. So what makes **Rotocast Tuff** so much more effective and different?



## TRULY WORLD-CLASS

Made with the help of international know-how and European processing equipments, this range is now being exported to customers across the world.

# 01

## INTERNATIONAL



## CONSISTENT CONSISTENCY

Products meet SAE requirements in specifications and spirit. All parameters can be guaranteed due to process line automation and calibration

# 02

## CONSISTENT



## SUPERIOR METALLURGY

Products are made through clean refined steel poured after refining & Micro alloying. Different heat treatment cycles ensures truly superior metallurgy

# 03

## METALLURGY



## SOLUTIONS - Not just products !

A team of in-house experienced application specialists will advise and guarantee performance & results. Analysis, Audits, Reviews and Training is included in the promise.

# 04

## SOLUTIONS



## NEW AGE PACKAGING

We provide waterproof, wooden pellet based sea worthy packing. This is something which has been appreciated by all our International customers.

# 05

## PACKAGING

So are we experimenting? Absolutely not. The product you are getting is already being exported to all of Europe, Canada, Latin America and Middle East. In the last 11 months we have exported more than what was exported in the last **five** years from India.

# Rotocast Tuff Shot

**Rotocast TUFF Shot** are part of the family of high performance abrasive media manufactured for the first time in India. These steel shot media are made through clean refined steel with special micro alloying and extremely tight quality controls. Processed and packed using a special processing line which has been put up with the help of International know-how and European equipments.

The steel refining, micro alloying and specially calibrated and controlled heat treatment cycles ensure that **Rotocast TUFF – Steel Shot** provide un-matched performance and life. They are at par with any International brand of repute.

For discerning buyers and manufacturing companies having high performance blasting equipments this is the steel shot they should try. We are sure they will never look at other steel abrasive varieties ever again.

**Rotocast TUFF** shots complies with SAE specifications J444 and J827.

## Chemistry :

- ☞ Carbon 0.85-1.20%
- ☞ Silicon 0.45-1.50%
- ☞ Manganese 0.35-1.20%
- ☞ Phosphorus <0.05%
- ☞ Sulphur <0.05%

## Applications :

Shot blasting , shot peening , surface preparations , ballast.

## Hardness :

40-50 HRc. (Rockwell C)

Custom hardness on request

## Density :

Not less than 7.0 g/cc.

## Complies with :



## Appearance :

Particles would be nearly spherical and complying with SAE specifications

## Size Distribution :

IS:M	3.35	2.80	2.36	2.00	1.70	1.40	1.18	1.00	0.85	0.71	0.60	0.50	0.425	0.355	0.30	0.180	0.125	IS
B.S.	6	7	8	10	12	14	16	18	20	22	25	30	36	44	50	80	120	4606
SAE	6	7	8	10	12	14	16	18	20	25	30	35	40	45	50	80	120	-SS-
S-930	All Pass		85% Min	97% Min														
S-780		All Pass		85% Min	97% Min													2000
S-660			All Pass		85% Min	97% Min												1700
S-550				All Pass		85% Min	97% Min											1400
S-460				All Pass	5% Max	85% Min	96% Min											1180
S-390				All Pass	5% Max	85% Min	96% Min											1000
S-330				All Pass	5% Max	85% Min	96% Min											850
S-280					All Pass	5% Max	85% Min	96% Min										710
S-230						All Pass	10% Max	85% Min	97% Min									600
S-170							All Pass	10% Max	85% Min	97% Min								425
S-110								All Pass	10% Max	80% Min	90% Min							
S-70									All Pass	10% Max	80% Min	90% Min						





**Rotocast TUFF Grit** are made by crushing specially produced **Rotocast TUFF – Steel Shot** with an extremely specialised process and imported equipments. The totally imported processing line along with the benefits of clean refined steel, special heat treatment cycles and tight quality controls ensure unmatched performance and life.

A simple inspection under the microscope by your trained lab technician will show that these steel grit are not comparable to any Indian steel grit made till date. In keeping with the modern times and ambitions of our country, they are truly – **'world class'**.



For discerning buyers and manufacturing companies having high performance grit blasting equipment this is the steel grit they should try. We are sure they will never look at other steel grit varieties ever again.

**Rotocast TUFF** grits complies with SAE specifications J444 and J1993.

### Chemistry :

- ☞ Carbon 0.80-1.20%
- ☞ Silicon > 0.40%
- ☞ Manganese 0.60 - 1.20%
- ☞ Phosphorus <0.05%
- ☞ Sulphur <0.05%

### Applications :

Pipe coating , stone cutting , surface preparations , grit blasting , air blasting.

**Hardness :** Three ranges are available :

**GH** = >60 HRc.

**GL** = 54-61 HRc.

**GP** = 40-50 HRc.

Custom hardness on request

### Density :

Not less than 7.4 g/cc.

### Size Distribution :

IS:MM	2.80	2.36	2.00	1.70	1.40	1.18	1.00	0.71	0.425	0.30	0.18	0.125
SAE	7	8	10	12	14	16	18	25	40	50	80	120
B.S.	6	7	8	10	12	14	16	22	36	50	80	120
G-10	All Pass		80%	90%								
G-12		All Pass		80%	90%							
G-14			All Pass		80%	90%						
G-16				All Pass		75%	85%					
G-18					All Pass		75%	85%				
G-25						All Pass		70%	80%			
G-40							All Pass		70%	80%		
G-50								All Pass		65%	75%	
G-80									All Pass		65%	75%

### Complies with :



International Organization for Standardization



# Rotocast Granite Grit

The use of specially made Steel grit for stone cutting operations was pioneered by Pometon, Italy. It is thus no surprise that "Pometon" has been a very respected name in granite cutting grit applications world over.

**Rotocast** Granite Grit is a result of a collaborative effort between Pometon, Italy and **Rotocast**, India. An effort which has made it possible to make this product range for the first time in India.

Specially made **Rotocast** Granite Grit is best suited for cutting hard stones, such as granite as well as marble. This specially produced grit is for use in large multi-blade frames which cut the blocks of granite or marble into thin slices.

Use of **Rotocast** Granite Grit leads to enhanced production and better granite finish apart from lesser blade erosion for the same unit of production.

### Chemistry :

- ☞ Carbon 0.85-1.20%
- ☞ Silicon 0.45-1.50%
- ☞ Manganese 0.35-1.20%
- ☞ Phosphorus <0.05%
- ☞ Sulphur <0.05%

### Density :

Not less than 7.4 g/cc.

### Complies with :



**Hardness :** Two ranges are available

- 63-67 HRC.
- 56-60 HRC.

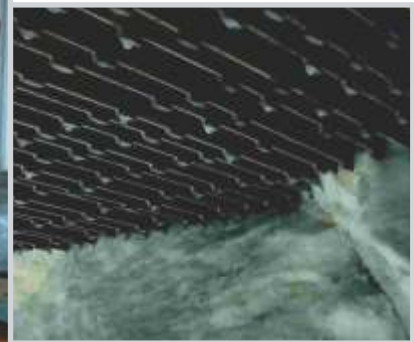
Custom hardness on request

### Size Distribution :

IS:MM	2.80	2.36	2.00	1.70	1.40	1.18	1.00	0.71	0.425	0.30	0.18	0.125
SAE	7	8	10	12	14	16	18	25	40	50	80	120
B.S.	6	7	8	10	12	14	16	22	36	50	80	120
G-10	All Pass		80%	90%								
G-12		All Pass		80%	90%							
G-14			All Pass		80%	90%						
G-16				All Pass		75%	85%					
G-18					All Pass		75%	85%				
G-25						All Pass		70%	80%			
G-40							All Pass		70%	80%		
G-50								All Pass		65%	75%	
G-80									All Pass		65%	75%



# Rotocast



As a manufacturer of high productivity abrasives we understand that our customers are looking more and more at solutions and not just products.

To meet these changing requirements we have put together a team of experienced application engineers. This specialised team will work with you to ensure the most optimum cutting, surface preparation, blasting or peening results.

These services form part of our promise to deliver not just products but complete results to our **Rotocast TUFF** range of customers.

Our services are a recognition of the fact that the your blasting, peening or cutting costs comprise of the cost of power, spares, wages, rejection costs, operating practices, equipment settings, abrasive selection and their consumption.

## The services are modeled in a manner to provide the highest impact to your operations by the use of:

- ❑ Detailed Periodic Process Audit of operations
- ❑ Advice on selection of Media for optimum results based on usage and equipment
- ❑ Supervised Trials and Testing to demonstrate **RESULTS**
- ❑ Optimizations and fine tuning to drive efficiencies
- ❑ Periodic Reviews and reports to top management of customers
- ❑ Operator Training and skill upgradation

### A. Periodic Seminars at our venue covering theoretical presentations and practical sessions on industrial blasting machines

- ★ Wheel Blasting
- ★ Air Blasting
- ★ Shot Peening

### B. Customized on-site sessions geared towards addressing your unique needs

- ★ by sales and service staff
- ★ adapted program as per customer needs
- ★ practical session carried out on customer's machines





## CONTACT US

---

591 Urla Industrial Complex,  
Urla, Raipur, Chhattisgarh  
India 493221

📞 : +91 9329827180

☎ : +91 771 4025571 or 4037725,

📠 : +91 771 4061864

✉ : [sales@rotocastgroup.com](mailto:sales@rotocastgroup.com)

[www.rotocastgroup.com](http://www.rotocastgroup.com)

**Rotocast** TUFF

ISO 9001-2008 Certified